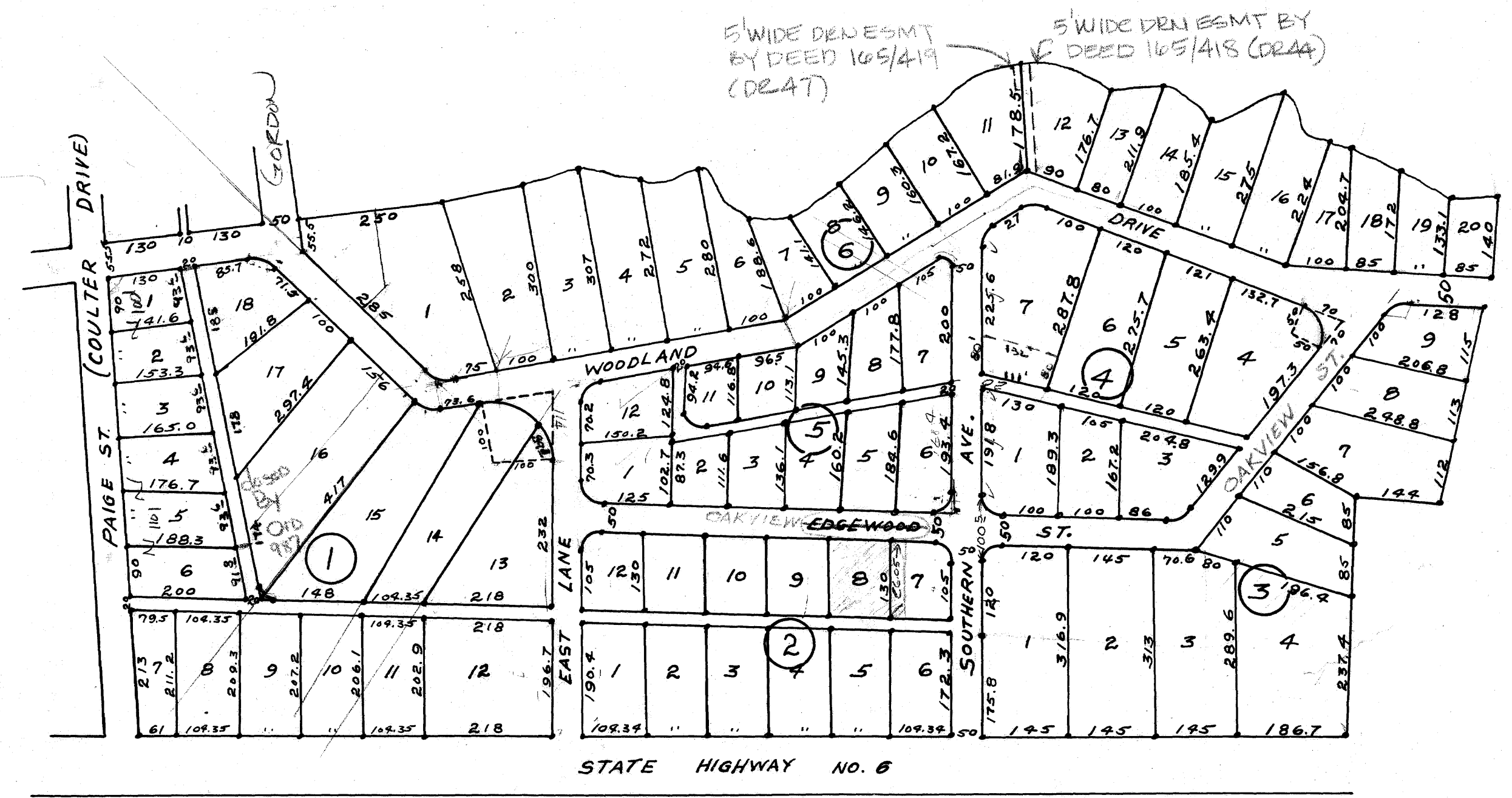


CAVITT'S WOODLAND HEIGHTS

NO. 2
(REVISED)
BRYAN, TEXAS

Scale: 1" ≈ 200' 1939
D.R. 104 Page 539

NOTE: Tangent distances on all
Curves are 25 ft. except as
noted.
All points circled are marked
by pipes or reinforced concrete.



3' 340
190
130
660

435
180
5-1

1920
22
1680

on lumber
from to tables